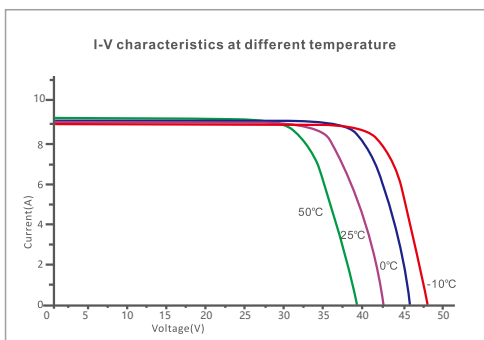
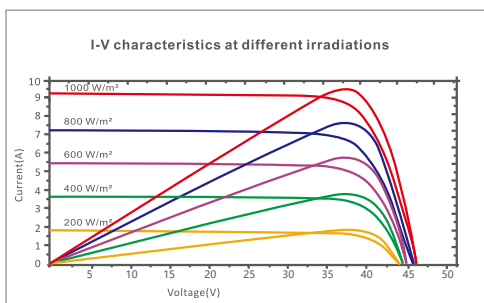
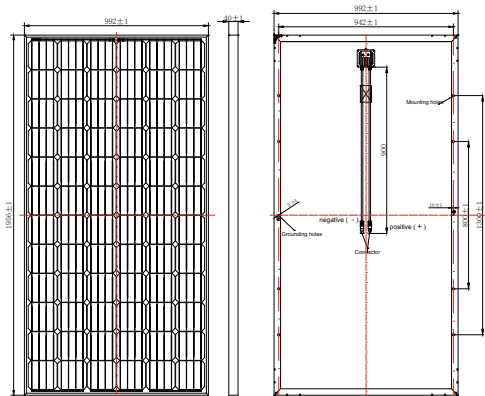


# RS6S-M



GLOBAL PROFESSIONAL PV PRODUCTS INTERGRATED SOLUTIONS SUPPLIER

Dimension of PV Modules Unit: mm



## ELECTRICAL DATA(STC)

Rated Power in Watts-Pmax(Wp)	320W	325W	330W	335W	340W
Open Circuit Voltage-Voc(V)	45.95V	46.09V	46.13V	46.17V	46.21V
Short Circuit Current-Isc(A)	9.08A	9.18A	9.28A	9.37A	9.46A
Maximum Power Voltage-Vmp(V)	37.26V	37.41V	37.57V	37.73V	38.05V
Maximum Power Current-Imp(A)	8.59A	8.69A	8.79A	8.88A	8.94A
Module Efficiency (%)	16.49%	16.75%	17.01%	17.26%	17.52%

STC: Irradiance 1000 W/m<sup>2</sup>, Cell Temperature 25°C, Air Mass AM1.5 according to EN 60904-3.

## ELECTRICAL DATA(NOCT)

Maximum Power-Pmax (Wp)	255W	259W	263W	267W	271W
Open Circuit Voltage-Voc (V)	45.35V	45.53V	45.71V	45.93V	46.30V
Short Circuit Current-Isc (A)	7.20A	7.29A	7.37A	7.45A	7.50A
Maximum Power Voltage-Vmp(V)	37.18V	37.32V	37.46V	37.65V	37.95V
Maximum Power Current-Imp(A)	6.86A	6.94A	7.02A	7.09A	7.14A

NOCT: Irradiance at 800 W/m<sup>2</sup>, Ambient Temperature 20°C, Wind Speed 1 m/s.

## MECHANICAL DATA

Solar cells	Mono-crystalline 156 x 156mm, 5 Bus bars
Cell configuration	72 cells(6x12)
Module dimensions	1956 x 992 x40mm(77.0 x 39.1 x 1.57in)
Weight	22KGS
Front Cover	3.2mm Tempered Glass
Frame Material	Anodized Aluminum Alloy
J-BOX	IP67
Cable	4mm <sup>2</sup> (IEC)/12AWG(UL),900mm
Connectors	MC4 or MC4 Comparable
Standard Packaging	26pcs/pallet

## TEMPERATURE & MAXIMUM RATINGS

Nominal Operating Cell Temperature (NOCT)	45°C±2°C
Temperature Coefficient of Voc	-0.32%/°C
Temperature Coefficient of Isc	0.05%/°C
Temperature Coefficient of Pmax	-0.39%/°C
Operational Temperature	-40~+85°C
Maximum System Voltage	1000V(IEC)/600V(UL)
Max Series Fuse Rating	15A
Limiting Reverse Current	15A

## PACKAGING CONFIGURATION

	40HQ	20GP
Number of modules per container	696pcs	260pcs
Package	26pcs/pallet,2pcs/carton box	26pcs/pallet
Package Number	24pallets + 36carton boxes	10pallets
Package Weight	600kg/pallet,46.2kg/carton box	600kg/pallet
Package Dimension	1980*1120*1130mm/pallet 1980*1020*90mm/carton box	1980*1120*1130mm/pallet

## Partner information

A: No 15 Puzhuang Avenue, Wuzhong District,  
Suzhou, Jiangsu Chian, 21500  
F: +86512-66292101 T: +86 512-66293858  
W: www.resunsolar.com E: info@resunsolar.com



RESUN SOLAR ENERGY CO.,LTD.



WWW.RESUNSOLAR.COM



**72 Cells**

Poly-crystalline

**320-340W**

Power output

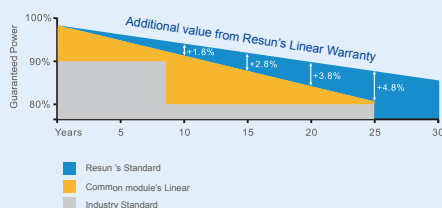
**17.52%**

The Highest Efficiency

**0~+5W**

Tolerance

**0.5% Annual Degradation  
over 30 years**



**LINEAR PERFORMANCE WARRANTY**

12 year Product Warranty / 30 year Linear Power Warranty

## RS6S-M

RS6S-M is a robust solar module with 72 solar cells. These modules can be used for on-grid solar applications. Our meticulous design and production techniques ensure a high-yield, long-term performance for every module produced. Our rigorous quality control and in-house testing facilities guarantee Resun Solar's modules meet the highest quality standards possible.

RS6S-M have five instead of three bus bars, which allows more efficient current collection and can also improve long term performance.

The RS6S-M cells use a novel junction formation technology which is standard in semiconductor manufacturing. This allows for improved minority carrier lifetimes and a very tight distribution of cell performance in manufacturing. RS6S-M cells are PID free and further increase the cell efficiency allowing to increase the average module power distribution.



**High module conversion efficiency (up to 17.52%),  
through superior manufacturing technology**



**Guaranteed 0~+5W positive power output tolerance  
ensures high reliability**



**Anti-reflective, hydrophobic coating improves light  
absorption and reduces surface dust**



**Excellent performance under low light environments  
(mornings, evenings and cloudy days)**



**Suitable for harsh environments, such as coasts, deserts and  
lakes. Withstand high level of wind loads (2400pa) and snow  
loads (5400pa)**

**Full range of products and certification systems**

ISO 9001 TUV PID-FREE CE IEC61215/61730/61701/62716

